

COREPOD ACOUSTIC BOOTH

SINGLE BOOTH

Specifications

MEETING BOOTH

Specifications

Finishes

COREPOD

SINGLE BOOTH

Specifications

Features

- Motion Sensor
- LED Dimmer System
- Ventilation system
- Seamless sleek handle
- Soft Closure
- AH Meyer Power & USB
- Standing Height Table
- Magnetic & Writable Whiteboard

Finishes

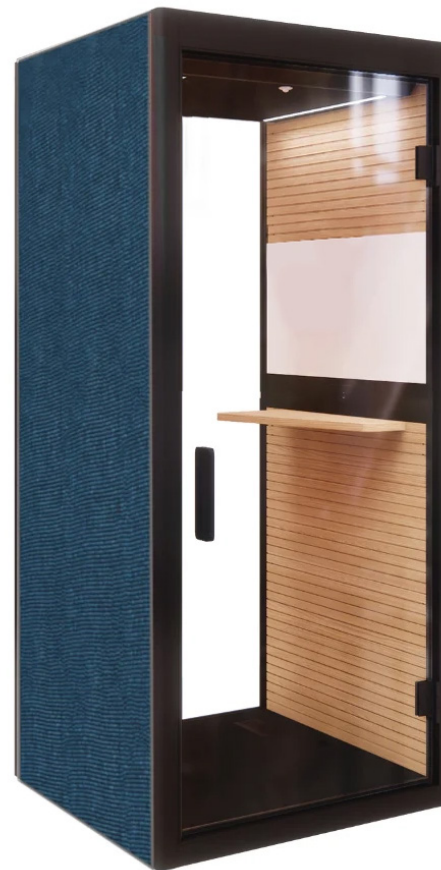
- External Fabrics: Orange Squash, Mustard Yellow, Green Moss, Ocean Blue, Grey Ash, Charcoal Grey.
- Exterior metal frame: Black
- Top: Shimo Ash
- Interior surface: Shimo Ash MDF, Sky Blue PET, Moonlight Grey PET, Creamy White PET, Sesame Black PET.

Dimensions (mm)

EXTERNAL W1000 x D1000 x H2350
INTERNAL W853 x D918 x H2070

Ideal environment for quick confidential calls and video conferences without disturbing your colleagues.

The soundproof phone booth allows for better communication as well as concentration in a standing or sitting position. The phone booth fits a single chair and optimal conditions for meetings with dimmable lighting.



SPECIFICATIONS

SINGLE BOOTH

Exterior Materials	
Exterior Walls	Melamine faced chipboard (Carb Phase 2 / EPA) Upholstery with sponge fabric
Fabric Material	Composition: 50% Cation + 50% Polyester
Frame Structure	Metal structure with epoxy powder coating
Swing Glass Door & Opening	Tempered door 10mm with flush hinges Opens to the outside (right)
Glass Panels	Laminated composite glass 10mm with silence film
Door Handle	Seamless aluminium powder coating sleek handle
Door Magnet	Top & bottom door magnet latch
Heavy duty castors	4
Levellers	4
Interior Materials	
Interior Walls	Recycled PET felt (polyethylene terephthalate)
Table	Melamine faced chipboard 25mm Carb Phase 2 with ABS edging 2mm
Floor Carpet	Melamine faced chipboard 25mm Carb Phase 2 with carpet cladding
Ceiling Roof	PET polyester wool
Wall Accessories	Foldable hanging hook (holds up to 3kg of ewight)
Furnishing	Standing table

Lighting & Ventilation	
Ventilation System	Air exchanged is performed with ambient air with super silent fans. Fan speed 100% PWM / 12V (rpm): 1500
Ventilation Fans (Ceiling)	1
Exhaust Fans (Ceiling)	1
Illumination Lightings	LED strip lights incorporated into the suspended ceiling panel Cool White 4,000k
Power	
Motion Sensor	Integrated into the ceiling controls illumination and ventilation with sensing (AC100–240V, 50–60Hz)
Touch Buttons	Light dimmer: On / Off & Adjustable light brightness with knob type Exhaust fans: On / Off knob type
Power Consumption	LED lights: 22.4W Quiet fan: 4.8W / Exhaust fan: 3.12W
Measurement	
Airflow	Fan speed 1500 (RPM) each 155 CFM Complete exchange of air at 100% fan power
Noise Reduction	± 24dBA
Weight	335kg - without crate 455kg - with crate

COREPOD

MEETING BOOTH

Specifications

Features

- Motion Sensor
- LED Dimmer System
- Ventilation system
- Seamless sleek handle
- Soft Closure
- AH Meyer Power & USB
- Table & Sofa

Finishes

- External Fabrics: Orange Squash, Mustard Yellow, Green Moss, Ocean Blue, Grey Ash, Charcoal Grey.
- Exterior metal frame: Black
- Top: Shimo Ash
- Interior surface: Shimo Ash MDF, Sky Blue PET, Moonlight Grey PET, Creamy White PET, Sesame Black PET.

Dimensions (mm)

EXTERNAL W2200 x D1200 x H2350
INTERNAL W2030 x D1140 x H2070

The sharing Pod is a convenient place to sit down for one-on-one meetings in private.

The pod module was also designed as a media, break out room and resting area accommodating up two to four people in a physically comfortable sound environment.



SPECIFICATIONS

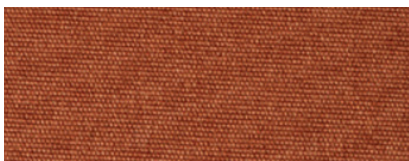
MEETING BOOTH

Exterior Materials	
Exterior Walls	Melamine faced chipboard (Carb Phase 2 / EPA) Upholstery with sponge fabric
Fabric Material	Composition: 50% Cation + 50% Polyester
Frame Structure	Metal structure with epoxy powder coating
Swing Glass Door & Opening	Tempered door 10mm with flush hinges Opens to the outside (right)
Glass Panels	Laminated composite glass 10mm with silence film
Door Handle	Seamless aluminium powder coating sleek handle
Door Magnet	Top & bottom door magnet latch
Heavy duty castors	4
Levellers	8
Interior Materials	
Interior Walls	Egg crate acoustic foam with sound-grooved melamine-faced MDF (Carb Phase 2) drilled acoustic tiled panels with nonwoven felt upholstery
Table	Melamine faced chipboard 25mm Carb Phase 2 with ABS edging 2mm
Floor Carpet	Melamine faced chipboard 25mm Carb Phase 2 with carpet cladding
Ceiling Roof	PET polyester wool
Wall Accessories	Foldable hanging hook (holds up to 3kg of ewight)
Furnishing	Table & Sofa

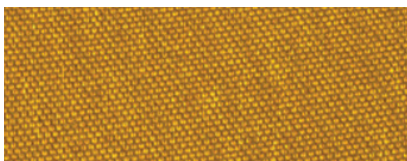
Lighting & Ventilation	
Ventilation System	Air exchanged is performed with ambient air with super silent fans. Fan speed 100% PWM / 12V (rpm): 1500
Ventilation Fans (Ceiling)	2
Exhaust Fans (Ceiling)	1
Illumination Lightings	LED strip lights incorporated into the suspended ceiling panel Cool White 4,000k
Power	
Motion Sensor	Integrated into the ceiling controls illumination and ventilation with sensing (AC100–240V, 50–60Hz)
Touch Buttons	Light dimmer: On / Off & Adjustable light brightness with knob type Exhaust fans: On / Off knob type
Power Consumption	LED lights: 22.4W / Down lights: 3W Quiet fan: 4.8W / Exhaust fan: 3.12W
Measurement	
Airflow	Fan speed 1500 (RPM) each 310 CFM Complete exchange of air at 100% fan power
Noise Reduction	± 24dBA
Weight	653kg - without crate 843kg - with crate

COREPOD FINISHES

EXTERIOR FABRICS



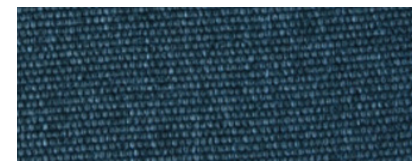
Orange Squash



Mustard Yellow



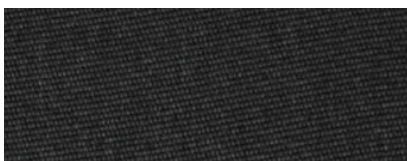
Green Moss



Ocean Blue



Grey Ash



Charcoal Grey

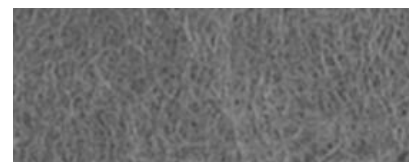
INTERIOR WALL



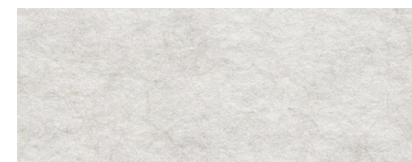
Sesame Black PET



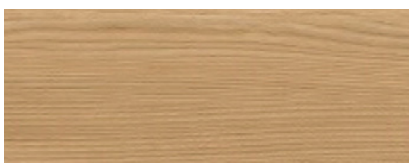
Sky Blue PET



Moonlight Grey PET



Creamy White PET



Shimo Ash MDF